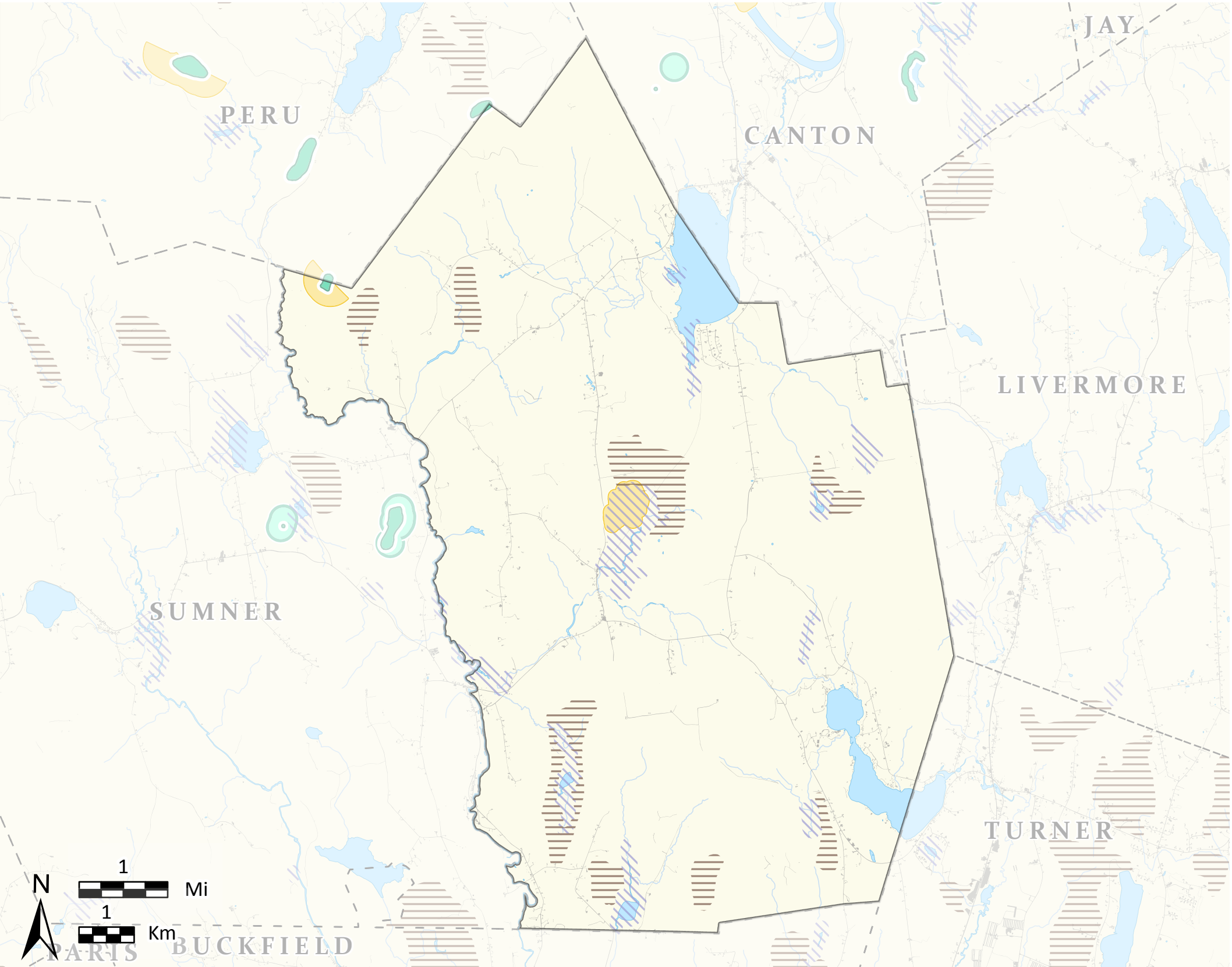


# Hartford

## High Value Plant and Animal Habitats



This map is nonregulatory and is intended for planning purposes only



- Organized Towns**
- Developed** Impervious surfaces such as roads and buildings.
- Rare or Endangered Wildlife\***
  - Endangered, Threatened, or Special Concern Species** Mapped observations of rare wildlife species.
- Rare or Exemplary Plants and Natural Communities**
  - Rare Plant Locations** Known rare, threatened, or endangered plant occurrences are based on field observations.
  - Rare and Exemplary Natural Communities** Mapped features are based on field surveys and aerial photo interpretation.
- Significant Wildlife Habitat**
  - Deer Wintering Area** Forested area possibly used by deer for shelter during periods of deep snow and cold temperatures.
  - Inland Waterfowl and Wading Bird Habitats** Breeding, migrating/staging, or wintering areas for inland waterfowl or breeding, feeding, loafing, migrating, or roosting areas for wading birds.

**Beginning with Habitat (BwH)** equips Maine communities, landowners, and conservation partners with tools to protect, restore, and connect important habitats and ecosystems in a changing climate. [www.beginningwithhabitat.org](http://www.beginningwithhabitat.org)

April 2025

TOWN BOUNDARIES - ME Office of GIS (2021)  
HYDROLOGY - U.S. Geological Survey National Hydrography Dataset(2016)  
DEVELOPED - NOAA Coastal Change Analysis Program (C-CAP) (2022)

RARE, ESSENTIAL & SIGNIFICANT WILDLIFE HABITATS - ME Office of GIS, ME Dep. of Inland Fisheries & Wildlife (2024)  
RARE NATURAL COMMUNITIES & PLANTS - ME Natural Areas Pgm (2024)